


17715B

Digital LUX Meter

Functions	MAX / MIN, Backlight, Auto Power Off with Disable Feature, Data Hold
Range	0.1 ~ 200,000 lux 0.0 ~ 20,000 fc
Accuracy	± 3% + 30 dgt
Resolution	0.1 lux or 0.1 fc
Selection	lux / fc
Power	1.5V AAA x 2 Batteries
Dimension	157 x 54 x 34mm (approx.)
Weight	170gms Including Battery (approx.)
Accessories	Carrying Case, Inst. Manual, 1.5V AAA x 2 Batteries (installed)

Note: Specifications are subject to change.

Tesca Technologies Pvt. Ltd.

IT-2013, Ramchandrapura Industrial Area, Sitapura Extension,
 Near Bombay Hospital, Vidhani Circle, Jaipur-302022, Rajasthan, India,
 Tel: +91-141-2771791 / 2771792; Email: info@tesca.in, tesca.technologies@gmail.com
 Website: www.tesca.in





17715E

Digital Sound Level Meter

Functions	MAX / MIN / HOLD, Auto Power Off
Range	35dB ~ 130dB (31.5Hz ~ 8 KHz)
Accuracy	± 1.5dB (under reference conditions)
Resolution	0.1dB
Power	9V Battery
Dimension	172 x 56 x 39 mm (approx.)
Weight	144gms Including Battery (approx.)
Accessories	Carrying Case, Inst. Manual, 9V Battery (installed)



17715C

Digital LUX Meter

Functions	MAX / MIN, Backlight, Auto Power Off
Range	0 ~ 200,000 lux 0 ~ 20,000 fc
Accuracy	± 5% rdg + 10 dgt (< 10,000 lux/fc) ± 10% rdg + 10 dgt (> 10,000 lux/fc)
Resolution	0.1lux or 0.1fc
Selection	lux / fc
Power	9V Battery
Dimension	190 x 56 x 39mm (approx.)
Weight	135gms Including Battery (approx.)
Accessories	Carrying Case, Inst. Manual, 9V Battery (installed)



17715D

Air Flow Anemometer

Air Flow Measuring	
Functions	m / Sec, Ft / min, Knots, Km / h, MPH, CFM, MAX / MIN / HOLD, Auto Power Off
Range	1 ~ 25m/s
Accuracy	± (3% rdg ± 0.2m/s)
Resolution	0.01m/s
Temperature Measuring	
Range	0 ~ 50°C, 32 ~ 122°F
Accuracy	± 2°C / ± 4.0°F
Resolution	0.1°C / 0.1°F
Power	9V Battery
Dimension	202 x 56 x 39mm (approx.)
Weight	155gms Including Battery (approx.)
Accessories	Carrying Case, Inst. Manual, 9V Battery (installed)

Note: Specifications are subject to change.



17715A

Humidity & Temperature Meter

Humidity Measuring	
Functions	°C / °F / RH Selection, MAX / MIN, Auto Power Off
Range	0% ~ 100% RH
Accuracy	± 3%RH (25°C, 20 ~ 80% RH) ± 3.5%RH (At Other Ranges)
Resolution	0.01%RH
Temperature Measuring	
Range	- 20°C ~ 80°C / - 4°F ~ 176°F
Accuracy	± 0.5°C / ± 0.9°F (25°C) ± 0.8°C / ± 1.5°F (At Other Ranges)
Resolution	0.01°C / 0.01°F
Power	9V Battery
Dimension	173 x 56 x 39mm (approx.)
Weight	139gms Including Battery (approx.)
Accessories	Carrying Case, Inst. Manual, 9V Battery (installed)

Tesca Technologies Pvt. Ltd.

IT-2013, Ramchandrapura Industrial Area, Sitapura Extension,
Near Bombay Hospital, Vidhani Circle, Jaipur-302022, Rajasthan, India,
Tel: +91-141-2771791 / 2771792; Email: info@tesca.in, tesca.technologies@gmail.com
Website: www.tesca.in



17715F



17715G



17715H

Temperature Range	-50°C ~ 380°C	-50°C ~ 550°C	-50°C ~ 1050°C
	-58°F ~ 716°F	-58°F ~ 1022°F	-58°F ~ 1922°F
Accuracy	± 1.5°C	± 1.5°C	± 1.5°C
Distance Spot Ratio	12 : 1	12 : 1	50 : 1
Emissivity	0.95	0.95	0.10 ~ 1.00 (Adjustable)
Repeatability	± 0.5°C or 1%	± 0.5°C or 1%	± 0.5°C or 1%
Wavelength	630 ~ 670nm	630 ~ 670nm	630 ~ 670nm
Resolution	0.1°C / 0.1°F	0.1°C / 0.1°F	0.1°C / 0.1°F
Spectral Response	6μm ~ 14μm	6μm ~ 14μm	8μm ~ 14μm
Special Function			
°C / °F Selection	✓	✓	✓
Laser Switch	✓	✓	✓
Auto Power Off	✓	✓	✓
Low Battery Indication	✓	✓	✓
Backlight Display	✓	✓	✓
MAX Function	✓	✓	✓
MIN Function	✓	✓	✓
DIF Function	-	-	✓
AVG Function	-	-	✓
Data Storage	-	-	✓
High / Low Temperature Alarm Settings Function	-	-	✓
LCD Size	30 x 31mm	30 x 31mm	36 x 27mm
Packing Information			
Power	9V Battery	9V Battery	9V Battery
Product Color	Yellow + Black	Yellow + Black	Yellow + Black
Product Size	170 x 92 x 46mm (approx.)	170 x 92 x 46mm (approx.)	235 x 130 x 54mm (approx.)
Product Net Weight	157gms including battery (approx.)	157gms including battery (approx.)	278gms including battery (approx.)
Accessories	Carrying Case x 1, Instruction Manual x 1, 9V Battery (installed) x 1	Carrying Case x 1, Instruction Manual x 1, 9V Battery (installed) x 1	Heavy Duty Carry Box x 1, Instruction Manual x 1, Tripod Stand x 1, 9V Battery (installed) x 1

Note: Specifications are subject to change.

Tesca Technologies Pvt. Ltd.

IT-2013, Ramchandrapura Industrial Area, Sitapura Extension,
Near Bombay Hospital, Vidhani Circle, Jaipur-302022, Rajasthan, India,
Tel: +91-141-2771791 / 2771792; Email: info@tesca.in, tesca.technologies@gmail.com
Website: www.tesca.in



17715L

Electrical Specifications

Sensor Type	Electric Field (E)
Frequency Range	50MHz to 3.5GHz
Directional Characteristic	Isotropic, triaxial
Measurement Range CW signal (f > 50MHz)	20mV/m to 108.0V/m, 53µA /m to 286.4mA /m, 1µW/m ² to 30.93W/m ² , 0µW/cm ² to 3.093mW/cm ²
Absolute Error (at 1V/m and 50MHz)	± 1.0dB
Frequency Response (Taking into Account Typical CAL Factor)	± 1.0dB (50MHz to 1.9GHz), ± 2.4dB (1.9GHz to 3.5GHz)
Isotropy Deviation	Typically ±1.0dB for f > 50MHz
Overload Limit	10.61mW / cm ² (200V/m)
Thermal Response (0 to 50°C)	± 0.2dB

Note

Unless otherwise stated, all specifications are Valid under the following assumptions :

- Sinusoidal Signals ● Device in far field of a source
- Sensor head pointing towards source
- Ambient temperature + 23°C ± 3°C (RH < 75%)

Note: Specifications are subject to change.

Tesca Technologies Pvt. Ltd.

IT-2013, Ramchandrapura Industrial Area, Sitapura Extension,
Near Bombay Hospital, Vidhani Circle, Jaipur-302022, Rajasthan, India,
Tel: +91-141-2771791 / 2771792; Email: info@tesca.in, tesca.technologies@gmail.com
Website: www.tesca.in

Features

- Frequency Range 50MHz to 3.5GHz
- For Isotropic Measurement of Electro Magnetic Fields
- Non-Directional (Isotropic) Measurement with Three-Channel Measurement Sensor
- High Dynamic Range due to Three Channel Digital Results Processing
- Configurable Alarm Threshold and Memory Function
- Easy and Safety to Use

Applications

- High Frequency (RF) Electromagnetic Wave Field Strength Measurement
- Mobile Phone Base Station Antenna Radiation Power Density Measurement
- Wireless Communication Applications (CW, TDMA, GSM, DECT)
- RF Power Measurement for Transmitters
- Wireless LAN (Wi-Fi) Detection, Installation
- Spy Camera, Wireless Bug Finder
- Cellular / Cordless Phone Radiation Safety Level
- Microwave Oven Leakage Detection
- Personal Living Environment EMF Safety

General Specifications

Measurement Method	Digital, Triaxial Measurement
Directional Characteristic	Isotropic, Triaxial
Measurement Range Selection	One Continuous Range
Display Resolution	0.1mV/m, 0.1µA/m, 0.1µW/m ² 0.001µW/cm ²
Setting Time	Typically 1s (0 to 90% of Measurement Value)
Display Refresh Rate	Typically 0.5 Seconds
Display Type	LCD 4 Digit
Audible Alarm	Buzzer
Measurement Units	mV/m, V/m, µA/m, mA/m, µW/m ² , mW/m ² , W/m ² , µW/cm ² , mW/cm ²
Measurement Display Value	Instantaneous Measured Value, Maximum Value or Maximum Average Value
Measurement Alarm Function	Adjustable Threshold with ON/OFF
Measurement Calibration Factor CAL	Adjustable
Manual Data Memory and Read Storage	99 Sets (only Recall by Meter)
Battery	9V x 1
Battery Life	> 15Hours
Dimension	60 x 60 x 237mm (approx.)
Weight	210gms Including Battery (approx.)
Accessories	Battery (installed), Carrying Case x 1 & Instruction Manual x 1



17715M

Electrical Specifications

Sensor Type	Electrical Field (E)
Frequency Range	10MHz to 8GHz
Directional Characteristic	Isotropic, triaxial
Measurement Range CW signal (f > 10MHz)	20mV/m to 108.0V/m, 53µA/m to 286.4mA/m, 1µW/m ² to 30.93W/m ² , 0µW/cm ² to 3.093mW/cm ²
Dynamic Range	Typically 75dB
Absolute Error (at 1V/m and 10MHz)	± 1.0dB
Frequency Response (Taking into Account Typical CAL Factor)	± 1.0dB (10MHz to 1.9GHz), ± 2.4dB (1.9GHz to 8GHz)
Isotropy Deviation	Typically ±1.0dB for f > 10MHz
Overload Limit	10.61mW/cm ² (200V/m)
Thermal Response (0 to 50°C)	± 0.5dB

Features

- Frequency Range 10MHz to 8.0GHz
- Triaxial Isotropic Measurement of EMF
- Non-Directional (Isotropic) Measurement with Three-Channel Measurement Sensor
- High Dynamic Range
- Configurable Alarm Threshold and Memory Function
- Easy & Safety to Use

Applications

- High Frequency (RF) Electromagnetic Wave Field Strength Measurement
- Mobile Phone Base Station Antenna Radiation Power Density Measurement
- Wireless Communication Applications (CW, TDMA, GSM, DECT)
- RF Power Measurement for Transmitters
- Wireless LAN (Wi-Fi) Detection, Installation
- Spy Camera, Wireless Bug Finder
- Cellular / Cordless Phone Radiation Safety Level
- Microwave Oven Leakage Detection
- Personal Living Environment EMF Safety

General Specifications

Measurement Method	Digital, Triaxial Measurement
Directional Characteristic	Isotropic, Triaxial
Measurement Range Selection	One Continuous Range
Display Resolution	0.1mV/m, 0.1: A/m, 0.1: W/m ² , 0.001: W/cm ²
Setting Time	Typically 1s (0 to 90% of Measurement Value)
Display Refresh Rate	Typically 0.5 Seconds
Display Type	LCD 4 Digit
Audible Alarm	Buzzer
Measurement Units	mV/m, V/m, µA/m, mA/m, µW/m ² , mW/m ² , W/m ² , µW/cm ² , mW/cm ²
Measurement Display Value	Instantaneous Measured Value, Maximum Value, Average Value or Maximum Average Value
Measurement Alarm Function	Adjustable Threshold with ON/OFF
Calibration Factor CAL	Adjustable
Manual Data Memory and Read Storage	99 Data Sets
Battery	9V x 1
Battery Life	> 3 Hours
Dimensions	68 x 60 x 247 mm (approx.)
Weight	255gms Including Battery(approx.)
Accessories	Battery (installed), Carrying Case x 1 & Instruction Manual x 1

Note: Specifications are subject to change.

Tesca Technologies Pvt. Ltd.

IT-2013, Ramchandrapura Industrial Area, Sitapura Extension,
Near Bombay Hospital, Vidhani Circle, Jaipur-302022, Rajasthan, India,
Tel: +91-141-2771791 / 2771792; Email: info@tesca.in, tesca.technologies@gmail.com
Website: www.tesca.in



177151

Specifications

Display	2.4" Color Display
Resolution	60 X 60
Total Pixels	3600
FOV / Shortest Focal Length	20° x 20° / 0.5m
Thermal Sensitivity	0.15 °C
Measuring Mode	Infrared Focal Plane Measuring Temperature
Temperature Range	-20°C ~ 300°C (-4°F ~ 572°F)
Measuring Accuracy	±2% digital / ± 2°C
Wavelength Range	8 ~ 14 μm
Image Capturing Frequency	6 Hz
Emissivity	0.1 ~ 1.0 (Adjustable)
Focus Mode	Fixed
Palette	Iron Red Color, Rainbow, Rainbow High Contrast, Grey Scale (White Glow) and Grey Scale (Black Glow)
Image Storage	Card (4GB)
Memory Card	Micro SD Card (installed)
File Format	BMP
Set Control	Unit Adjustment / Language / Date Time Format / Automatic Shutdown
Battery Type	AA x 4 Batteries
Battery Life	6 Hours
Operating Temp.	-5°C ~ 40°C
Storage Temperature	-20°C ~ 50°C
Relative Humidity	10% RH ~ 80% RH
Vibration	2G, IEC 60068 - 2 - 6
Drop resistance	2m
Size	212 x 95 x 62mm (approx.)
Weight	320gms (approx.)
Accessories	Carrying Case, Inst. Manual, Micro SD Card (installed), AA x 4 Batteries (Installed)

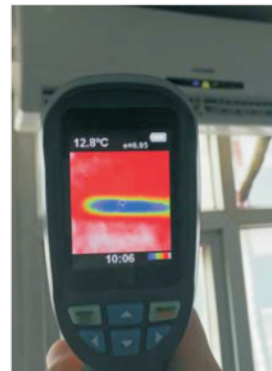
Thermal Imaging Camera which combines the functions of surface temperature measurement and real-time thermal imaging.

Traditional Thermal Imaging Cameras measure each component one by one but product does it together thus saving customer's time. The potential problem is clearly displayed on the color screen which helps customer to quickly locate the central point and temperature of the problem area.

To improve recognition, this product is equipped with a vision camera. Based on practical requirements, it can turn thermal image into visual image. Thermal image and visual image can be stored in the memory card. Adjust the images and store them in PC which are used to generate reports or for printing. After seconds it can be tested. This product is the optimum product for electrician and maintenance personnel. It can quickly find out the problem area.

Applications

- Predictive Maintenance of Electrical Equipment
- Transport Industry and Car Maintenance
- Electronic & Electrical Manufacturing
- Archaeological Study
- Automotive Manufacturing
- Furnace & Smelting



Air Conditioner



Air Cooler



Vehicle Maintenance



Hot Kettle



Electrical Switchgear

Note: Specifications are subject to change.

Tesca Technologies Pvt. Ltd.

IT-2013, Ramchandrapura Industrial Area, Sitapura Extension,
Near Bombay Hospital, Vidhani Circle, Jaipur-302022, Rajasthan, India,
Tel: +91-141-2771791 / 2771792; Email: info@tesca.in, tesca.technologies@gmail.com
Website: www.tesca.in



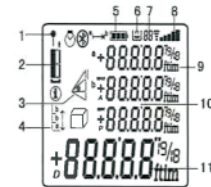
17715J
17715K

Applications



Specifications

Model	17715J	17715K
Range	0.05 ~ 60m	0.05 ~ 100m
Units	Meter / Inches / Feet	Meter / Inches / Feet
Display Illumination (Backlight)	✓	✓
Min / Max, Measurement / Continuous Measurement	✓	✓
Addition / Subtraction	✓	✓
Pythagoras Measurement	✓	✓
Area / Volume Calculation	✓	✓
Triangular Area Measurement	✓	✓
Historical Storage	✓ (20)	✓ (20)



Display Screen

1. Laser On Indicator
2. Reference Edge Measuring Indicator
3. Area/Volume/Legs of A Triangle Laying Off Indicator
4. Laying Off Function Indicator
5. Battery Level Indicator
6. Data Storage Indicator
7. Data Storage Number Indicator
8. Signal Strength Indicator
9. Unit Indicator (Including Power and Cube)
10. Secondary Display Area
11. Main Display Area

Functions

- Addition / Subtraction
- Area Measurement
- Volume Measurement
- Pythagorean Measurement
- Laying Off
- Data Storage / Paging Out

Note: Specifications are subject to change.

Tesca Technologies Pvt. Ltd.

IT-2013, Ramchandrapura Industrial Area, Sitapura Extension,
Near Bombay Hospital, Vidhani Circle, Jaipur-302022, Rajasthan, India,
Tel: +91-141-2771791 / 2771792; Email: info@tesca.in, tesca.technologies@gmail.com
Website: www.tesca.in

