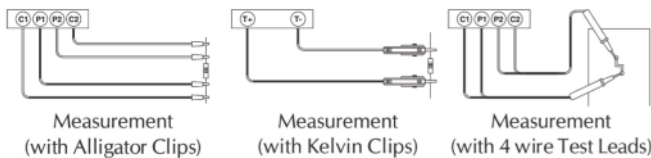




17710A, 17710B

Application



Electrical Specifications (23°C ± 5°C)

Manual Range

| | Resistance Range | Resolution | Accuracy |
|---------------|---------------------|------------|-----------------|
| 10A 17710B | 400μΩ ~ 4000μΩ | 1μΩ | ± 0.25% ± 25μΩ |
| | 1.500mΩ ~ 16.000mΩ | 1μΩ | ± 0.25% ± 25μΩ |
| | 5.000mΩ ~ 60.000mΩ | 1μΩ | ± 0.25% ± 25μΩ |
| 5A 17710A | 1.000mΩ ~ 8.000mΩ | 1μΩ | ± 0.25% ± 25μΩ |
| | 5.00mΩ ~ 32.00mΩ | 10μΩ | ± 0.25% ± 250μΩ |
| | 10.00mΩ ~ 120.00mΩ | 10μΩ | ± 0.25% ± 250μΩ |
| 1A | 4.00mΩ ~ 40.00mΩ | 10μΩ | ± 0.25% ± 250μΩ |
| | 15.00mΩ ~ 160.00mΩ | 10μΩ | ± 0.25% ± 250μΩ |
| | 50.00mΩ ~ 600.00mΩ | 10μΩ | ± 0.25% ± 250μΩ |
| 100mA | 0.0400Ω ~ 0.4000Ω | 100μΩ | ± 0.25% ± 2.5mΩ |
| | 0.1500Ω ~ 1.6000Ω | 100μΩ | ± 0.25% ± 2.5mΩ |
| | 0.5000Ω ~ 6.0000Ω | 100μΩ | ± 0.25% ± 2.5mΩ |
| 10mA | 0.400Ω ~ 4.000Ω | 1mΩ | ± 0.25% ± 25mΩ |
| | 1.500Ω ~ 16.000Ω | 1mΩ | ± 0.25% ± 25mΩ |
| | 5.000Ω ~ 60.000Ω | 1mΩ | ± 0.25% ± 25mΩ |
| 1mA | 4.00Ω ~ 40.00Ω | 10mΩ | ± 0.25% ± 250mΩ |
| | 15.00Ω ~ 160.00Ω | 10mΩ | ± 0.25% ± 250mΩ |
| | 50.00Ω ~ 600.00Ω | 10mΩ | ± 0.25% ± 250mΩ |
| 100μA | 0.0400kΩ ~ 0.4000kΩ | 100mΩ | ± 0.75% ± 3Ω |
| | 0.1500kΩ ~ 1.6000kΩ | 100mΩ | ± 0.75% ± 3Ω |
| | 0.5000kΩ ~ 6.0000kΩ | 100mΩ | ± 0.75% ± 3Ω |

Features

- Basic Accuracy 0.25%
- Max. Test Current : 10A (60mΩ) for 17710B, 5A (120mΩ) for 17710A
- Manual or Auto Range
- Four Terminal Kelvin Measurement
- 6 Ranges with 1μΩ Best Resolution
- Measurement of Resistive and Inductive Materials
- Setting for HI, LO & PASS Readings
- Memory of 3000 Measurements Data
- Programmable HI-LO Alarm with memory of 20 Data
- Large LCD with Backlight & HOLD Function
- Low Power Consumption
- Battery Operated (Rechargeable Battery)
- Low Battery indication
- LED indication for Invalid Resistance Measurement
- Cable Length Measurement in feet & meters
- User Interface Software for PC Communication via RS232C (to USB Bridge) Cable
- Built-in Battery Charging Circuit & Calendar Clock

General Specifications

- Battery Charging Time 10Hrs
- AC Adaptor : Input 110V or 220V AC, Output DC 15V/1 ~ 3A
- LCD Display 4 5/6 Digit + Backlight
- Dimension : 260 x 158 x 70mm (approx.)
- Weight : 1125gms Including Battery (approx.)
- Environment : 0°C ~ 50°C ≤ 85% RH (Operation)
:-20°C ~ 60°C ≤ 75% RH (Storage)

Accessories

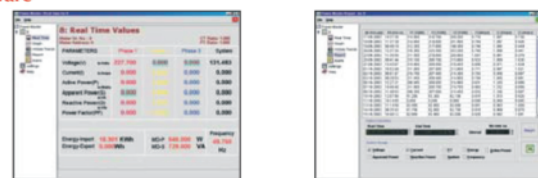
- Users Manual x 1 ● Software Manual x 1 ● Software CD x 1
- RS232C (to USB Bridge) Cable x 1 ● AC Adaptor x 1
- 11.1V Rechargeable Lithium Battery (2500mAh) x 1 for 17710A
- 11.1V Rechargeable Lithium Battery (3800mAh) x 1 for 17710B
- 1 Set of Kelvin Clips
- Carrying Bag ● Optional : 4 Wire Test Leads

Electrical Specifications (23°C ± 5°C)

Auto Range

| | Resistance Range | Resolution | Accuracy |
|------------|---------------------|------------|-----------------|
| 10A 17710B | 400μΩ ~ 60.000mΩ | 1μΩ | ± 0.25% ± 25μΩ |
| 5A 17710A | 1.000mΩ ~ 8.000mΩ | 1μΩ | ± 0.25% ± 25μΩ |
| | 8.00mΩ ~ 120.00mΩ | 10μΩ | ± 0.25% ± 250μΩ |
| 1A | 4.00mΩ ~ 600.00mΩ | 10μΩ | ± 0.25% ± 250μΩ |
| 100mA | 0.0400Ω ~ 6.0000Ω | 100μΩ | ± 0.25% ± 2.5mΩ |
| 10mA | 0.400Ω ~ 60.000Ω | 1mΩ | ± 0.25% ± 25mΩ |
| 1mA | 4.00Ω ~ 600.00Ω | 10mΩ | ± 0.25% ± 250mΩ |
| 100μA | 0.0400kΩ ~ 6.0000kΩ | 100mΩ | ± 0.75% ± 3Ω |

Software



Application program to represent Real Time Values & Facility to open / save recorded data, plot data, export data, print display screen, parameter setting etc. The screen also displays current time, start time, system mode, sample rate, high limit, low limit, sample count & present sample value. The program also supports plotting of present or recorded data.

Note: Specifications are subject to change.

Tesca Technologies Pvt. Ltd.

IT-2013, Ramchandrapura Industrial Area, Sitapura Extension,
Near Bombay Hospital, Vidhani Circle, Jaipur-302022, Rajasthan, India,
Tel: +91-141-2771791 / 2771792; Email: info@tesca.in, tesca.technologies@gmail.com
Website: www.tesca.in